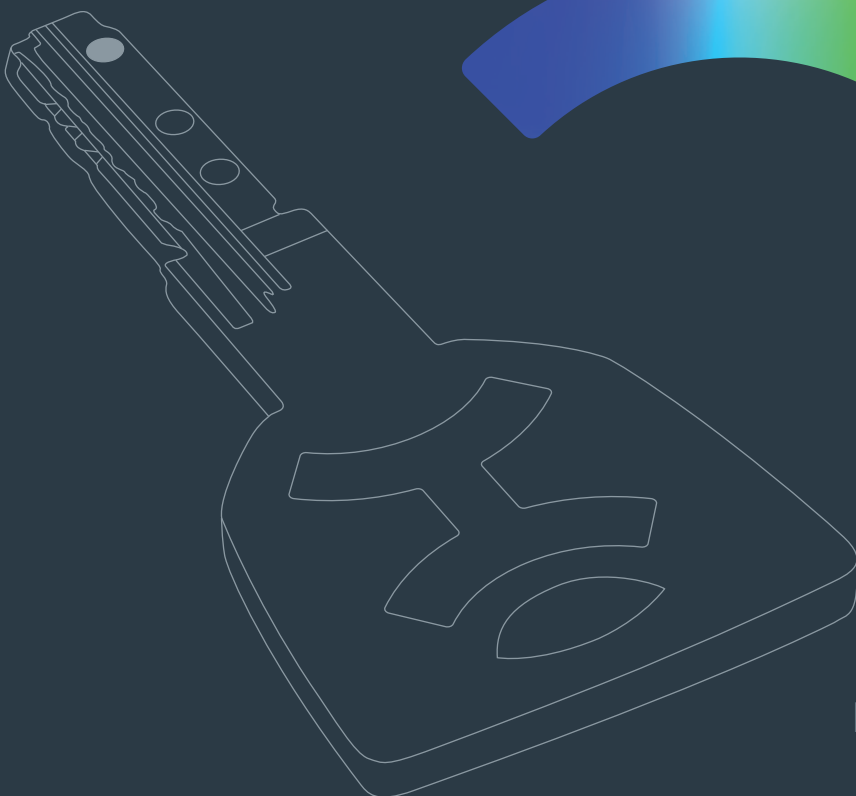
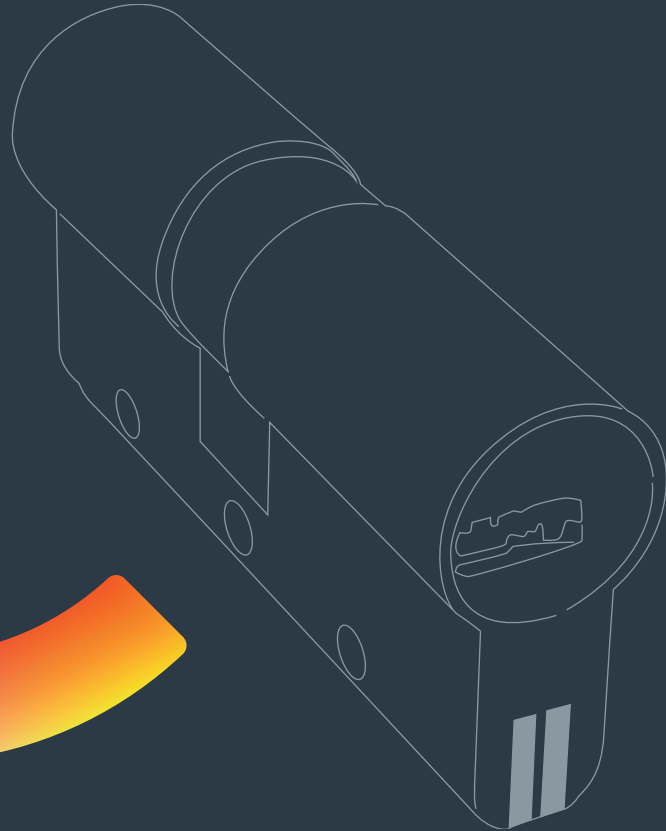




AP4S  TM
SYSTEM

AP4 S cylinder



Patented System
Protected Duplication by 3D[®]
Made in Italy

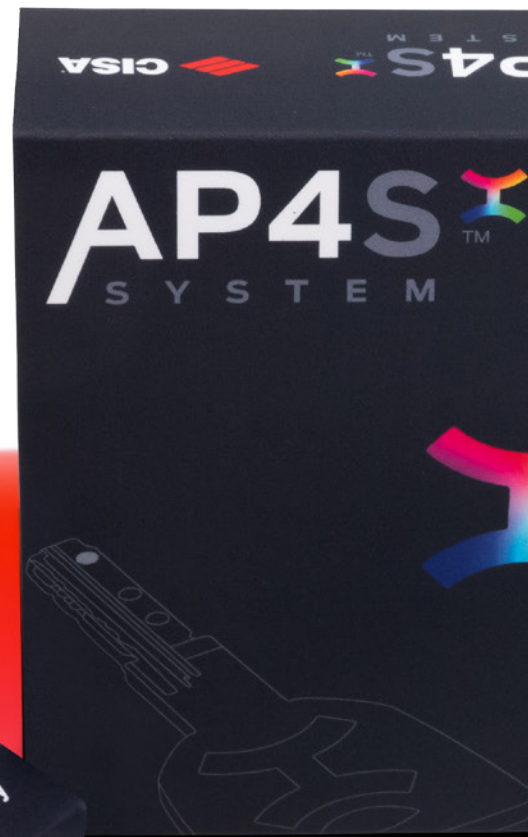


ALL-REACHING SECURITY

The cylinder and key are both patented to ensure greater protection against the main techniques for forcing entry and key duplication is more controlled as it is only possible upon presenting the Security Card at CISA Solution Partners or CISA.

ONE KEY FOR MULTIPLE ACCESSES

With One Key, you can open several doors using the same key (KA) or control multiple accesses with the CE, MK and GMK systems. This convenient solution reduces the number of keys needed, without lowering the level of security.



CONTROLLED ACCESS

The system guarantees flexible, convenient and secure access management, granting entry to certain areas only to those who are authorised to do so.

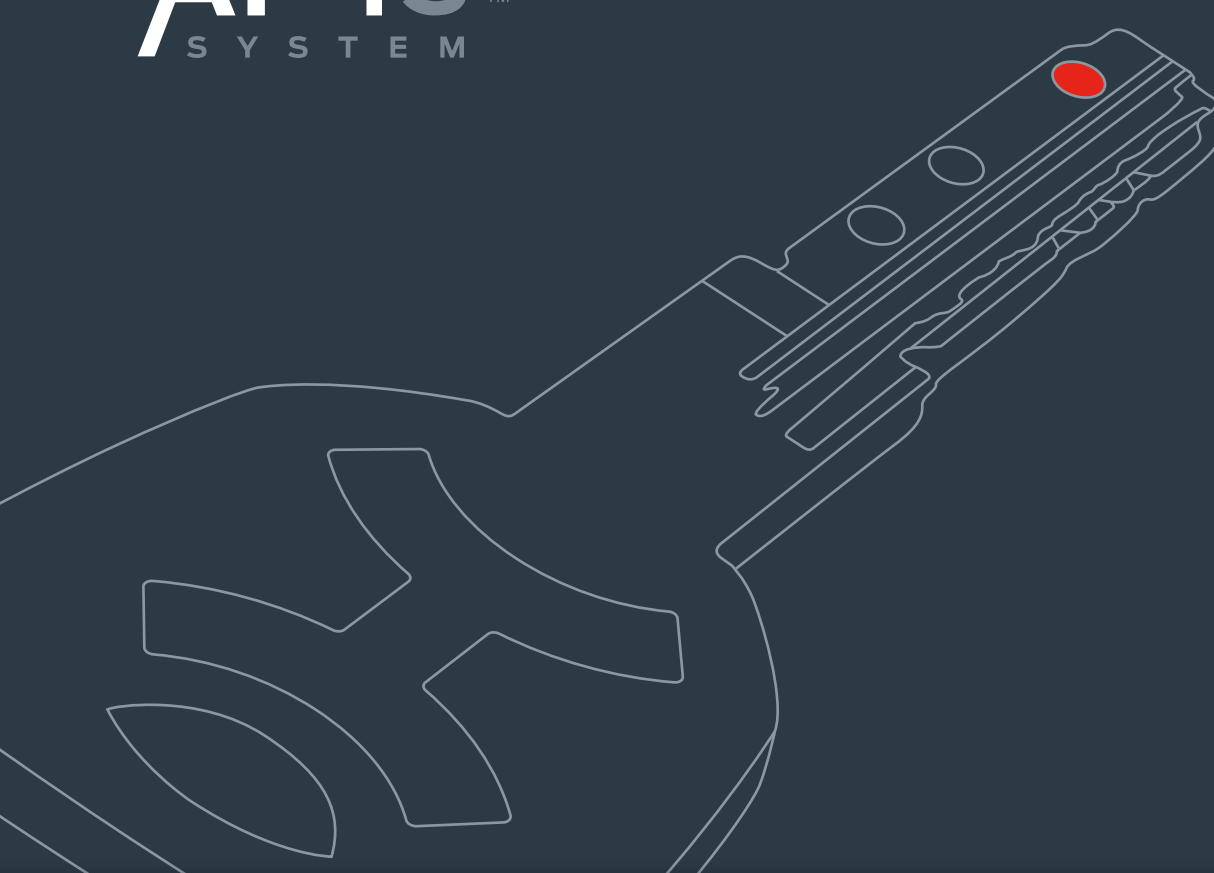
PERSONALISED KEYS

A coloured insert can be applied to the key bow, making it immediately recognisable and identifying the user's level of hierarchy and use.

APPLICATIONS

AP4 S is designed for high security applications in the residential sector and for the armoured door industry. It offers excellent access management potential, together with **UNLIMITED** protection against key duplication. Ideal for companies, shopping centres, universities and hospitals.





Key

SECURITY

Key Related Security

- **PATENT PCT/IT2013/000297-AP4**
Protected key duplication thanks to **AP4 System technology**, keys can only be duplicated at CISA Solution Partners or CISA
- **3D TRADE MARK NO. 1276648**
Greater control over key cloning, **thanks to the protected mobile element**, providing **unlimited** protection over time.
- **Security Card** for authorised key duplication only at CISA Solution Partners and CISA.
- **11-pin key bitting system on 3 rows.**
Offers excellent access management potential.
E.g. 132,000 different cylinders with one master key
- Up to 80 million possible combinations or **different keys** (mechanical profiles included).

TECHNICAL FEATURES

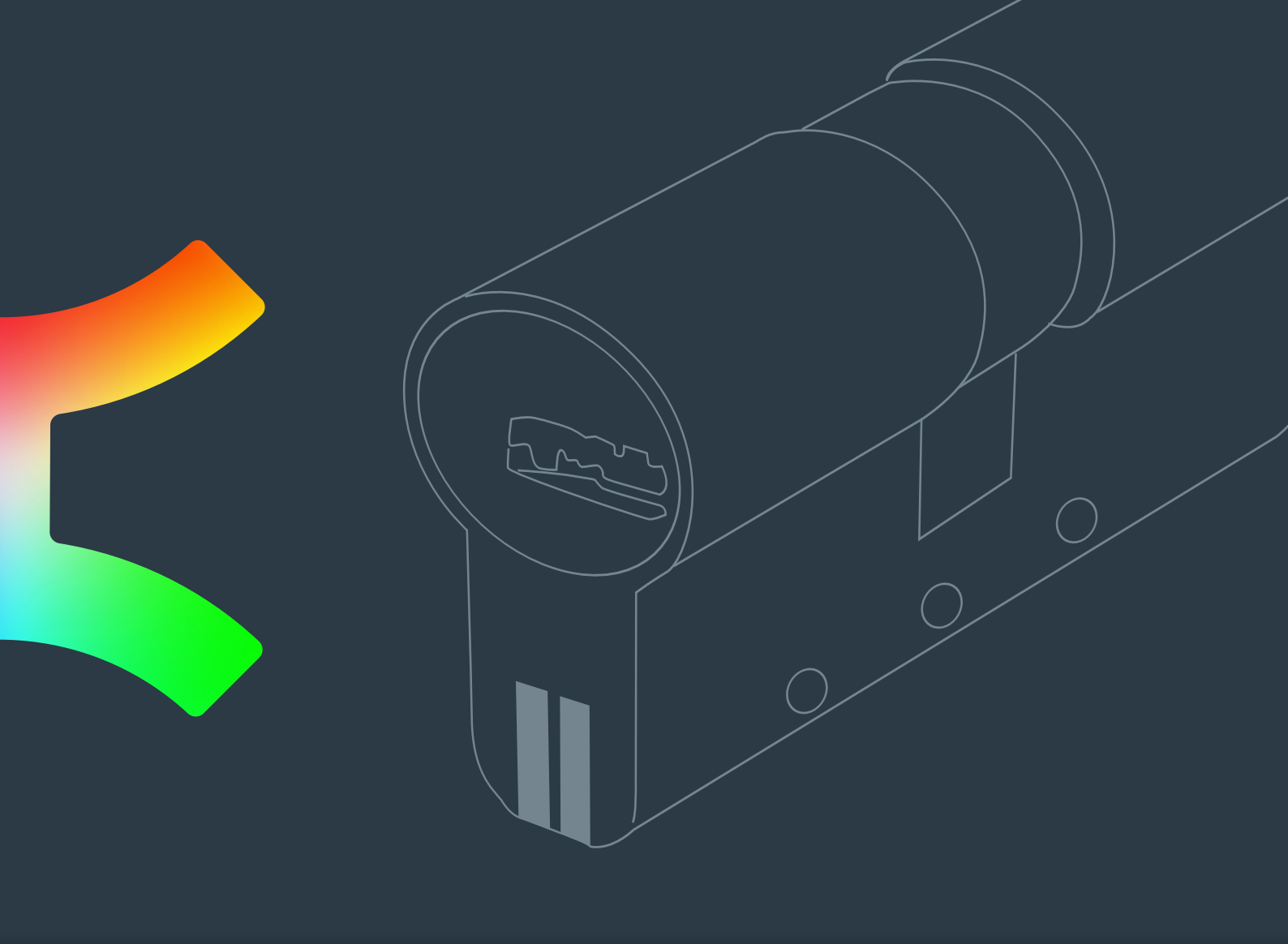
- Flat reversible.
- In nickel silver alloy.
- Numerical code on key bow.
- Key thickness 2.9 mm.
- Depth 0.48 mm.
- Compatible with protective roses.
- Key bow can be personalised with an insert available in 15 different colours.



In compliance with EN 1303:2015 160B0C6D♦1.

Key Related Security: 6						Attack Resistance: D					Durability: 6		
1	2	3	4	5	6	0	A	B	C	D	4	5	6





Cylinder

SECURITY

Attack resistance



- **SNAP RESISTANT PATENT EP1583878**
Certified resistance against breaking and pulling, thanks to **patented SNAP RESISTANT technology**: bi-material segment pack in hardened steel and stainless steel central segment visible from the outside on both sides of the cylinder



- **BKP PATENT PCT/WO2007/074163A1.**
Certified protection against bumping, thanks to **BKP patented technology** (Bump Key Power)



- **PATENT PCT/IT2016/000093**
High resistance to **picking**, thanks to the **system** with new special drivers.
- Certified drill resistance, thanks to the **key biting system in hardened steel**.
- High resistance to forced entry using the impression or wax technique, thanks to the special configuration of the springs.

TECHNICAL FEATURES

- 12-pin key-biting system (6 active, 5 passive, 1 patented pin).
- Brass body with segment pack along the whole length of the cylinder (excluding single cylinders, various cylinders and rim cylinders).
- Brass plugs.
- Clutch-type cam in self-lubricating sintered DIN steel.
- Hardened steel pins and drivers.
- Phosphor bronze and steel springs.
- 100,000 cycles (in compliance with EN 1303: 2015 Durability: 6).

Finishes

- Standard: nickel-plated satin brass (fin. 12).
- On request: polished brass (fin. 66).

In compliance with EN 1303:2015 160B0C6D♦1.

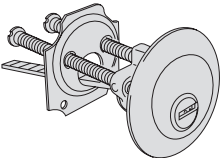
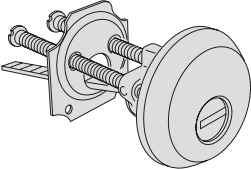
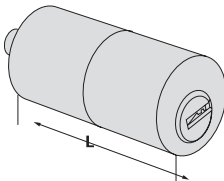
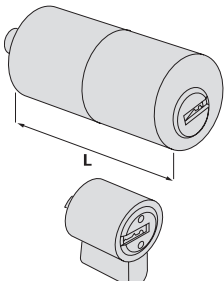
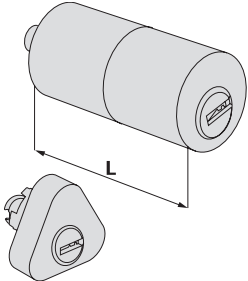
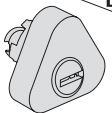
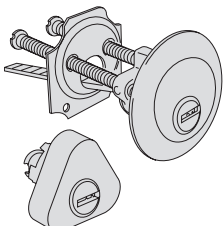
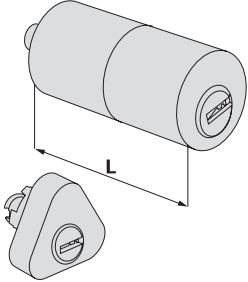
Key Related Security: 6						Attack Resistance: D				Durability: 6			
1	2	3	4	5	6	0	A	B	C	D	4	5	6

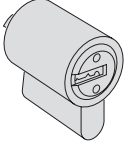
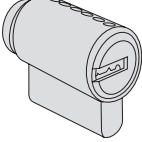
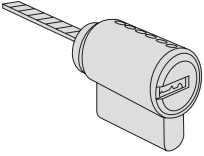
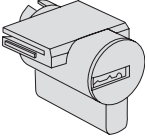
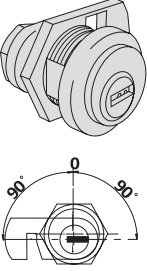
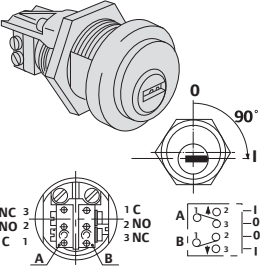
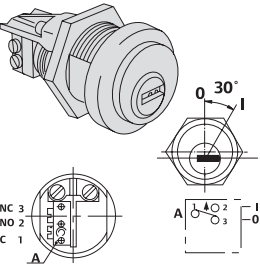


Type	Description	Comm. dim.			Plns	Key item	Kg	Unit W	Pieces	ITEM				
		L	A	B						Type	Dim.	Hand	Fin.	Perf. Spec.
	<ul style="list-style-type: none"> • Double cylinder with clutch system 	30/30	59.0	29.5	29.5	12	100810 00 0	0.235	1	1	OP3SI	07	0	12
		28/34	61.2	27.7	33.5	12	100810 00 0	0.235	1	1	OP3SI	06	0	12
		30/35	64.0	29.5	34.5	12	100810 00 0	0.243	1	1	OP3SI	26	0	12
		33/33	65.0	32.5	32.5	12	100810 00 0	0.258	1	1	OP3SI	10	0	12
		35/35	69.0	34.5	34.5	12	100810 00 0	0.272	1	1	OP3SI	13	0	12
		40/30	69.0	39.5	29.5	12	100810 00 0	0.272	1	1	OP3SI	12	0	12
		30/45	74.0	29.5	44.5	12	100810 00 0	0.274	1	1	OP3SI	27	0	12
		35/40	74.0	34.5	39.5	12	100810 00 0	0.274	1	1	OP3SI	28	0	12
		30/50	79.0	29.5	49.5	12	100810 00 0	0.301	1	1	OP3SI	17	0	12
		35/45	79.0	34.5	44.5	12	100810 00 0	0.289	1	1	OP3SI	19	0	12
		40/40	79.0	39.5	39.5	12	100810 00 0	0.289	1	1	OP3SI	18	0	12
		30/55	84.0	29.5	54.5	12	100810 00 0	0.304	1	1	OP3SI	33	0	12
		35/50	84.0	34.5	49.5	12	100810 00 0	0.360	1	1	OP3SI	31	0	12
		40/45	84.0	39.5	45.5	12	100810 00 0	0.360	1	1	OP3SI	30	0	12
		30/60	89.0	29.5	59.5	12	100810 00 0	0.320	1	1	OP3SI	20	0	12
		35/55	89.0	34.5	54.5	12	100810 00 0	0.332	1	1	OP3SI	32	0	12
		40/50	89.0	39.5	49.5	12	100810 00 0	0.320	1	1	OP3SI	21	0	12
		45/45	89.0	44.5	44.5	12	100810 00 0	0.333	1	1	OP3SI	29	0	12
		30/65	94.0	29.5	64.5	12	100810 00 0	0.334	1	1	OP3SI	41	0	12
		35/60	94.0	34.5	59.5	12	100810 00 0	0.390	1	1	OP3SI	38	0	12
		40/55	94.0	39.5	54.5	12	100810 00 0	0.355	1	1	OP3SI	42	0	12
		45/50	94.0	44.5	49.5	12	100810 00 0	0.334	1	1	OP3SI	39	0	12
		30/70	99.0	29.5	69.5	12	100810 00 0	0.349	1	1	OP3SI	24	0	12
		35/65	99.0	34.5	64.5	12	100810 00 0	0.349	1	1	OP3SI	22	0	12
		40/60	99.0	39.5	59.5	12	100810 00 0	0.349	1	1	OP3SI	25	0	12
		45/55	99.0	44.5	54.5	12	100810 00 0	0.349	1	1	OP3SI	43	0	12
		50/50	99.0	49.5	49.5	12	100810 00 0	0.349	1	1	OP3SI	23	0	12
		30/75	104.00	29.5	74.5	12	100810 00 0	0.360	1	1	OP3SI	56	0	12
		35/70	104.00	34.5	69.5	12	100810 00 0	0.360	1	1	OP3SI	49	0	12
		45/60	104.00	44.5	59.5	12	100810 00 0	0.360	1	1	OP3SI	54	0	12
		55/50	104.00	54.5	49.5	12	100810 00 0	0.360	1	1	OP3SI	64	0	12
		30/80	109.0	29.5	79.5	12	100810 00 0	0.378	1	1	OP3SI	37	0	12
		35/75	109.0	34.5	74.4	12	100810 00 0	0.378	1	1	OP3SI	57	0	12
		40/70	109.0	39.5	69.5	12	100810 00 0	0.400	1	1	OP3SI	35	0	12
		50/60	109.0	49.5	59.5	12	100810 00 0	0.400	1	1	OP3SI	36	0	12
		55/55	109.0	54.5	54.5	12	100810 00 0	0.400	1	1	OP3SI	70	0	12
		30/85	114.0	29.5	84.5	12	100810 00 0	0.420	1	1	OP3SI	77	0	12
		40/75	114.0	39.5	74.5	12	100810 00 0	0.420	1	1	OP3SI	59	0	12
		45/70	114.0	44.5	69.5	12	100810 00 0	0.420	1	1	OP3SI	61	0	12
		50/65	114.0	49.5	64.5	12	100810 00 0	0.420	1	1	OP3SI	65	0	12
55/60	114.0	54.5	59.5	12	100810 00 0	0.420	1	1	OP3SI	71	0	12		
30/90	119.0	29.5	89.5	12	100810 00 0	0.450	1	1	OP3SI	52	0	12		
40/80	119.0	39.5	79.5	12	100810 00 0	0.450	1	1	OP3SI	60	0	12		
50/70	119.0	49.5	69.5	12	100810 00 0	0.450	1	1	OP3SI	66	0	12		
60/60	119.0	59.5	59.5	12	100810 00 0	0.450	1	1	OP3SI	40	0	12		
30/100	129.0	29.5	99.5	12	100810 00 0	0.450	1	1	OP3SI	53	0	12		

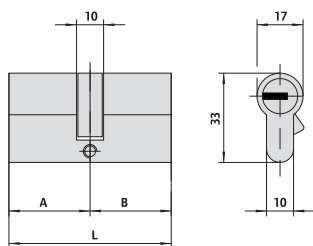
	<ul style="list-style-type: none"> • Single cylinder with 8-position adjustable cam 	30/10	39.5	29.5	10.0	12	100810 00 0	0.185	1	1	OP3I4	02	0	12
		35/10	44.5	34.5	10.0	12	100810 00 0	0.195	1	1	OP3I4	07	0	12
		40/10	49.5	39.5	10.0	12	100810 00 0	0.215	1	1	OP3I4	03	0	12
		45/10	54.5	44.5	10.0	12	100810 00 0	0.225	1	1	OP3I4	08	0	12
		50/10	59.5	49.5	10.0	12	100810 00 0	0.245	1	1	OP3I4	04	0	12
		60/10	69.5	59.5	10.0	12	100810 00 0	0.275	1	1	OP3I4	05	0	12
		65/10	74.5	64.5	10.0	12	100810 00 0	0.290	1	1	OP3I4	21	0	12
		70/10	79.5	69.5	10.0	12	100810 00 0	0.305	1	1	OP3I4	06	0	12
		80/10	89.5	79.5	10.0	12	100810 00 0	0.330	1	1	OP3I4	20	0	12
		95/10	104.5	94.5	10.0	12	100810 00 0	0.380	1	1	OP3I4	13	0	12

Type	Description	Comm. dim.	L	A	B	Pins	Key item	Kg	Unit W	Pieces	ITEM				
											Type	Dim.	Hand	Fin.	Pers.
<ul style="list-style-type: none"> • Double cylinder pre-set for thumb turn shaft • ON REQUEST: Thumbturns item 06353, 06355, 06356, 06357 		30/30	59.0	29.5	29.5	12	100810 00 0	0.244	1	1	OP3S2 07 0 12				
		30/35	64.0	29.5	34.5	12	100810 00 0	0.264	1	1	OP3S2 26 0 12				
		35/30	64.0	34.5	29.5	12	100810 00 0	0.259	1	1	OP3S2 81 0 12				
		33/33	65.0	32.5	32.5	12	100810 00 0	0.267	1	1	OP3S2 10 0 12				
		30/40	69.0	29.5	39.5	12	100810 00 0	0.279	1	1	OP3S2 82 0 12				
		35/35	69.0	34.5	34.5	12	100810 00 0	0.279	1	1	OP3S2 13 0 12				
		40/30	69.0	39.5	29.5	12	100810 00 0	0.279	1	1	OP3S2 12 0 12				
		35/40	74.0	34.0	39.5	12	100810 00 0	0.294	1	1	OP3S2 28 0 12				
		30/45	74.0	29.0	44.5	12	100810 00 0	0.294	1	1	OP3S2 27 0 12				
		40/35	74.0	39.5	34.5	12	100810 00 0	0.294	1	1	OP3S2 83 0 12				
		45/30	74.0	44.5	29.5	12	100810 00 0	0.294	1	1	OP3S2 91 0 12				
		30/50	79.0	29.5	49.5	12	100810 00 0	0.318	1	1	OP3S2 17 0 12				
		35/45	79.0	34.5	44.5	12	100810 00 0	0.309	1	1	OP3S2 19 0 12				
		40/40	79.0	39.5	39.5	12	100810 00 0	0.309	1	1	OP3S2 18 0 12				
		45/35	79.0	44.5	34.5	12	100810 00 0	0.309	1	1	OP3S2 85 0 12				
		40/45	84.0	39.5	44.5	12	100810 00 0	0.324	1	1	OP3S2 30 0 12				
		45/40	84.0	44.5	39.5	12	100810 00 0	0.324	1	1	OP3S2 84 0 12				
		30/60	89.0	29.5	59.5	12	100810 00 0	0.353	1	1	OP3S2 20 0 12				
		40/50	89.0	39.5	49.5	12	100810 00 0	0.350	1	1	OP3S2 21 0 12				
		45/45	89.0	44.5	44.5	12	100810 00 0	0.347	1	1	OP3S2 29 0 12				
		40/55	94.0	39.5	54.5	12	100810 00 0	0.355	1	1	OP3S2 42 0 12				
		55/40	94.0	54.5	39.5	12	100810 00 0	0.367	1	1	OP3S2 98 0 12				
		45/50	94.0	44.5	49.5	12	100810 00 0	0.367	1	1	OP3S2 39 0 12				
		40/60	99.0	39.5	59.5	12	100810 00 0	0.367	1	1	OP3S2 25 0 12				
		45/55	99.0	44.5	54.5	12	100810 00 0	0.370	1	1	OP3S2 43 0 12				
		50/50	99.0	49.5	49.5	12	100810 00 0	0.370	1	1	OP3S2 23 0 12				
		40/65	104.0	39.5	64.5	12	100810 00 0	0.384	1	1	OP3S2 44 0 12				
		45/60	104.0	44.5	59.5	12	100810 00 0	0.384	1	1	OP3S2 54 0 12				
		55/50	104.0	54.5	49.5	12	100810 00 0	0.384	1	1	OP3S2 64 0 12				
		30/80	109.0	29.5	79.5	12	100810 00 0	0.400	1	1	OP3S2 37 0 12				
	35/75	109.0	34.5	74.5	12	100810 00 0	0.400	1	1	OP3S2 57 0 12					
	40/70	109.0	39.5	69.5	12	100810 00 0	0.400	1	1	OP3S2 35 0 12					
	50/60	109.0	49.5	59.5	12	100810 00 0	0.400	1	1	OP3S2 36 0 12					
	45/70	114.0	44.5	69.5	12	100810 00 0	0.400	1	1	OP3S2 61 0 12					
	50/65	114.0	49.5	64.5	12	100810 00 0	0.400	1	1	OP3S2 65 0 12					
<ul style="list-style-type: none"> • Double cylinder pre-set for thumb turn adjustable shaft • To install with protective rose item 1.06458.20 • ON REQUEST: Thumbturns item 06353, 06355, 06356, 06357 		30/30	59.0	29.5	29.5	12	100810 00 0	0.284	1	1	OP3S7 07 0 12				
		35/30	64.0	34.5	29.5	12	100810 00 0	0.294	1	1	OP3S7 81 0 12				
		40/30	69.0	39.5	29.5	12	100810 00 0	0.312	1	1	OP3S7 12 0 12				
		45/30	74.0	44.5	29.5	12	100810 00 0	0.320	1	1	OP3S7 91 0 12				
		50/30	79.0	49.5	29.5	12	100810 00 0	0.329	1	1	OP3S7 90 0 12				
		55/30	84.0	54.5	29.5	12	100810 00 0	0.345	1	1	OP3S7 92 0 12				
		60/30	89.0	59.5	29.5	12	100810 00 0	0.359	1	1	OP3S7 87 0 12				
		65/30	94.0	64.5	29.5	12	100810 00 0	0.359	1	1	OP3S7 A3 0 12				
		70/30	99.0	69.5	29.5	12	100810 00 0	0.370	1	1	OP3S7 88 0 12				
		80/30	110.0	79.5	29.5	12	100810 00 0	0.380	1	1	OP3S7 93 0 12				
		90/30	120	89.5	29.5	12	100810 00 0	0.392	1	1	OP3S7 C6 0 12				
		100/30	130	99.5	29.5	12	100810 00 0	0.398	1	1	OP3S7 C7 0 12				
Type	Description			Key item			Pieces	ITEM							
<ul style="list-style-type: none"> • AP4 key blank, PG profile 				100810 00 0		50	1	00810 00 0							
	<ul style="list-style-type: none"> • AP4 key blank, pre-drilled PE profile 			100815 00 0		50	1	00815 00 0 PP							

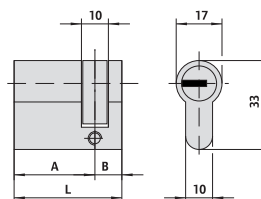
Type	Description	For locks series	L	Plins	Key item	Kg	Unit W	Pieces	ITEM				
									Type	Dim.	Hand	Fin.	Pers.
	<ul style="list-style-type: none"> Cylinder 	1A610, 11610, 50110, 50130, 50180, 50330, 54310, 54315, 54340, 54510, 54550, 54570	12	100810 00 0	0.204	1	1	OP510 00 0 12					
	<ul style="list-style-type: none"> Cylinder with nickel-plated anti-pulling and drill resistant protective rose 		12	100810 00 0	0.325	1	1	OP510 10 0 12					
	<ul style="list-style-type: none"> Tubular cylinder 	1A611, 11611, 50111, 50131, 50181, 50411, 50481, 50511, 50581, 54316, 54341	50.0	12 100810 00 0	0.215	1	1	OP210 55 0 12					
	<ul style="list-style-type: none"> Cylinder set with tubular external cylinder 	1A631, 1A721, 1A731	50.0	12 100810 00 0	0.295	1	1	OP150 00 0 12					
	<ul style="list-style-type: none"> Cylinder set with tubular external cylinder 	50121, 50126, 50141, 50161, 50171, 50421, 50461, 50471, 50521, 50561, 50571	12	100810 00 0	0.295	1	1	OP116 00 0 12					
		11631, 11731, 11931	12	100810 00 0	0.295	1	1	OP120 00 0 12					
	<ul style="list-style-type: none"> Cylinder set 	11670	12	100810 00 0	0.295	1	1	OP156 00 0 12					
	<ul style="list-style-type: none"> Cylinder set with tubular external cylinder 	11721, 11921	50.0	12 100810 00 0	0.295	1	1	OP149 00 0 12					

Type	Description	Door thickness Plms	Key item	Kg Unit W	Pieces	ITEM					
						Type	Dim.	Hand	Fin.	Pers. Spec.	
	<ul style="list-style-type: none"> Plug for steel padlocks 2 keys Pickled brass body Complete with coupling plate item 1.07573.08.0 	12	100810 00 0	0.117	1	1	OP610	00	0	00	
	<ul style="list-style-type: none"> Cylinder for outside access device item 1.07078.28.0 	12	100810 00 0	0.117	1	1	OP610	10	0	12	
	<ul style="list-style-type: none"> Cylinder for outside access device item 1.07078.29.0 	12	100810 00 0	0.117	1	1	OP610	11	0	12	
	<ul style="list-style-type: none"> Cylinder for push-to-open Meroni locks 	12	100810 00 0	0.117	1	1	OP610	12	0	12	
	<ul style="list-style-type: none"> Key extraction in position (0) Ring item 1.06021.10.0 Deadbolt item 1.06414.20.0 or 1.06414.30.0 to order separately 	17	12	100810 00 0	0.117	1	1	OP410	00	0	12
	<ul style="list-style-type: none"> Microswitch (7 A, 250 V) with welding terminals Automatic return to key extraction position (0) Ring item 1.06021.10.0 	17	12	100810 00 0	0.117	1	1	OP415	01	0	12
	<ul style="list-style-type: none"> Microswitch (7 A, 250 V) with welding terminals Automatic return to key extraction position (0) Ring item 1.06021.10.0 	17	12	100810 00 0	0.117	1	1	OP415	03	0	12

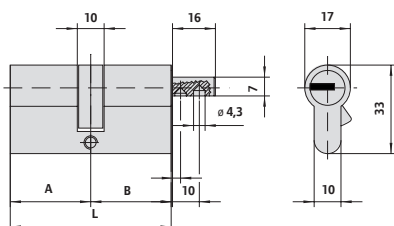
Drawings and dimensions



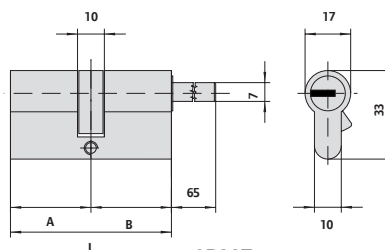
OP351



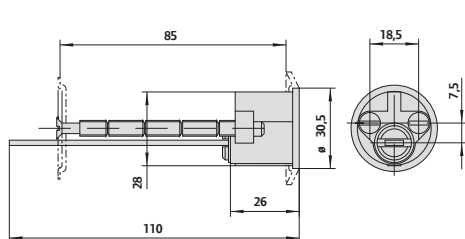
OP314



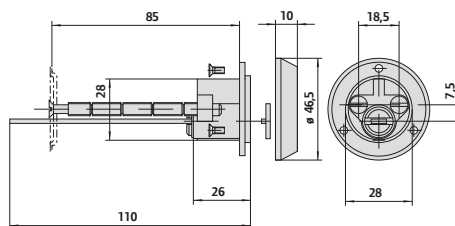
OP352



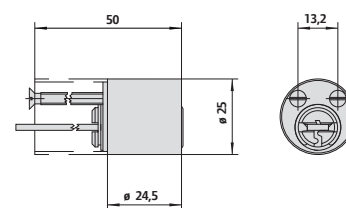
OP357



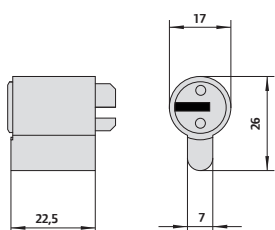
OP510



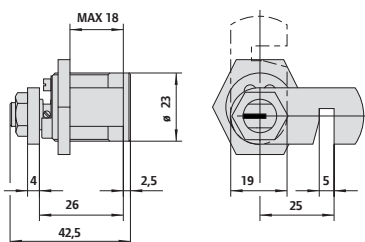
1.OP510.10.0



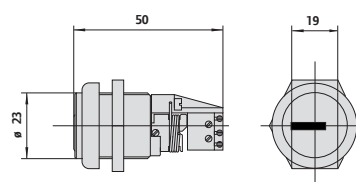
OP210



OP610



OP410



OP415

A stylized logo consisting of a vertical bar with a rainbow gradient, flanked by two curved shapes that meet at the top and bottom, resembling a keyhole or a stylized 'Y' shape.

**One
Key**TM



ONE KEY FOR MULTIPLE ACCESSSES

About Allegion™

Allegion (NYSE: ALLE) is a global pioneer in safety and security, with leading brands like CISA®, Interflex®, LCN®, Schlage®, SimonsVoss® and Von Duprin®. Focusing on security around the door and adjacent areas, Allegion produces a range of solutions for homes, businesses, schools and other institutions. Allegion is a \$2 billion company, with products sold in almost 130 countries.

For more visit allegion.com



CISA SpA
Via Oberdan 42
48018 Faenza (RA) Italy
Tel +39 0546 677111
Fax +39 0546 677150
cisa.vendite@allegion.com
cisa.com
cisahotels.com

@cisalocks

